



ATHLONE AERIAL

Athlone Branch ,Inland Waterways Association Of Ireland
All Correspondence to: Athlone Aerial, Seans Bar, Main St., Athlone.

January 1991

HAPPY NEW YEAR TO ALL OUR MEMBERSHIP.

ooo000000000000ooo

Branch Meeting.

Next Monday 14th January
8.30pm Sean's Bar.

Dates for your Diary.

Dublin Branch Annual Supper Dance and Social
Friday, 25th January,
Court Hotel, Killiney.

1990 on the Shannon.
Through the Lens of
Walter Borner.

Sat. 16th February
in
The Jolly Mariner.

Shannon Flooding.

For the second winter in a row flooding is again at record levels causing severe damage and hardship in the Shannon Basin and in particular the land south of Athlone.

Despite relatively low levels in early December the rainfall in the second half of the month has seen the rapid rise of seven feet in the space of two weeks.

The situation is of grave concern particularly as it is a full month earlier than last year. With the flood waters not receding until March / April last it now appears that both human and financial resources will again be stretched to provide fodder for livestock quite apart from the day to day survival in the present arctic conditions.

The political appraisal of the Shannon Flood Problem is an apparent "all or nothing " situation. That is a requirement for a full Shannon Drainage Scheme which cannot be justified on a cost effective basis.

The Shannon Forum has proposed that selective areas be evaluated and channel improvements made. Drainage schemes have been done on both the Inny and the Suck yet there has been no allocation to carry out any drainage work on the Shannon.

There is general agreement that the overall Shannon Flooding cannot be eliminated. Selective drainage should be evaluated and implemented.

A Special Thought.

For Mrs Bernie Piggott, secretary at Athlone Cruisers who has given us great help in recent years in the production of the Aerial. Bernie has been seriously injured in a recent traffic accident and is critically ill.

Sympathy.

On behalf of the I.W.A.I. we extend deepest sympathy to Eridie and Damien Delaney on the recent death of Bridie's brother John.

Pollution Particles.

At its simplest pollution can be categorised under three headings. It can be chronic, intermittent or occasional. Pollution is said to be chronic when the pollution substance is entering the body of water continuously and in greater quantities than the biochemical properties of the water are able to deal with. The results are very evident as the river or lake is unable to support any type of life, fly, vegetable or fish, that one normally associates with clean water.

Pollution may be intermittent resulting, particularly in rivers, in water that looks fine, but the lack of fish life is an indication of the true state of the situation.

Pollution may be occasional, normally the result of an accident caused perhaps by a flood, or the bursting of a holding tank. These are the occurrences which hit the headlines, because it often results in a vast kill of fish.

Indeed the damage is often far worse than if what had been stored had been allowed to discharge continuously in a normal way.

In fact to quote a Trust publication of many years ago, " Unless installations for the storage of potentially polluting materials are proof against fools and Acts of God, they are a constant threat to nearby rivers and lakes. "

To this I would add " knaves ", as regrettably, there are all too many involved who are not adverse to knocking out a bung or opening a stop - cock on a dark stormy night.

For Sale.

Diesel Engines.

Offers invited for up to 3 old Thorneycroft RNR 6 cylinder 75 hp at 1600 rpm Complete with SCG hydraulic gearboxes 2.1 red. Ex. passenger boats, in excellent running order, with quantity of new and used spares. Suit heavy houseboat or canal barge.

1 available now, other 2 are handed, available Autumn 91.
Can be seen working.

Galley Cruising Restaurants,
New Ross, Co. Wexford

051 21723

Norfolk Knight.

27 foot Motor Sailer, Perkins 4107,
Aluminium Spars, 4 wheel trailer.
£10,500. 0902-74805.

Annual General Meeting Report.

The Chairman Declan Walsh in his report welcomed the President Damien Delaney to the Athlone Branch A.G.M. in this a time when winds of change were blowing in the history of the Association.

Whilst welcoming the advent of legislation and the changing attitude in the protection of our environment he expressed reservations on the passage of the 1990 Shannon Act and the implications of forthcoming discussions on registration and mooring charges.

On the National front he outlined the major developments with the reopening of the Royal Canal from Blanchestown to Mullingar, the major engineering repairs to the Grand Canal and the official start of restoration work on the Ballinamore and Ballyconnell Canal with the completion expected 1993 /94. 1990 saw the formation of a new I.W.A.I. on the Slaney.

Regional developments brought our ongoing participation on the Shannon Forum and its aspiration towards a Shannon Authority. The severe flooding of 1990 and the navigation development to the Suck.

The President Damien Delaney addressed the meeting outlining the financial and planned programme for the restoration of the Shannon Erne Link and the recent submissions of the I.W.A.I. to Brady , Shipman and Martin who are undertaking an overall development stratgy for our waterways nationally at the request of the O.P.W.

In conclusion the Chairman thanked the Secretary John Dingle and the committee for their support and congratulated Damien on his election as National President, a great honour for Athlone.

The following officers and committee were elected

Chairman ;	Declan Walsh.	Vice Chairman ;	Damien Delaney.
Secretary ;	John Dingle.		
Treasurer ;	Sean Fitzsimons.		
Hon. Auditor ;	Reg Redmond.		
Pollution Officer ;	Arch Deacon Cave.		

Aerial;

Declan Walsh, Arch Deacon Cave, Rosemary Furlong,
Reggie Redmond

Rally.

Denis Treacy, Sam Heraghty, Denis Skehan, Declan Walsh

ATHLONE BRANCH I.W.A.I.

Income & Expenditure A/c - Year ending 30th September 1990

	1990	1989
INCOME		
Subscriptions	\$ 1,081	1,111
Profit on 3 film/slide shows	82	113
Profit on Supper Dance	87	152
Profit on Sales	146	113
Deposit Interest	118	56
	<u>\$ 1,514</u>	<u>1,545</u>

EXPENDITURE		
Athlone Aerial - Production	\$ 79	88
Athlone Aerial - Postage	361	331
Insurance	210	185
Capitalion Fees	130	111
Harry Rice Competition	20	20
A.G.M. Expenses	75	30
Moorings - repairs	120	119
Bank Charges	7	16
Sundries	65	80
Shortage in Cash Receipts	32	—
	<u>\$ 1,099</u>	<u>980</u>
Excess of Income over Expenditure	<u>\$ 415</u>	<u>565</u>
Quayside Project		235
		<u>800</u>

Balance Sheet as at 30th September 1990

	1990	1989
ASSETS		
Bank - Current A/c	\$ 650	850
Bank - Deposit A/c	4,186	3,809
Cash on hands	1,088	—
Debtors	20	—
Stock for sale (at cost)	249	268
Prize Bonds	105	105
	<u>\$ 6,298</u>	<u>5,032</u>

LESS LIABILITIES		
Creditors	1,353	502
NET ASSETS	<u>\$ 4,945</u>	<u>4,530</u>
REPRESENTED BY		
Accumulated Fund at 30/9/89	\$ 4,530	
Add : Surplus for 1990	415	
	<u>\$ 4,945</u>	

I have examined the foregoing Balance Sheet and Accounts which are in agreement with the books of the branch and have obtained all information and explanations which, to the best of my knowledge and belief, were necessary for the purpose of the audit. In my opinion the Balance Sheet and Accounts give a true and fair view of the branch's financial transactions for the period and of the state of its affairs as at 30th September 1990.



Reginaid Redmond, B. Comm.
Hon. Auditor



ATHLONE AERIAL

Athlone Branch ,Inland Waterways Association Of Ireland
All Correspondence to: Athlone Aerial, Seans Bar, Main St., Athlone.

February 1991

Next Branch Meeting
Monday 4th February 8.30 p.m.
Seans Bar.

Family Night Out

We are again delighted to welcome back Walter Borner to present a slide show on the Shannon.

Remembering last year we were treated to an evening of beauty, nostalgia and camera art.

Write it down, its a good one.

Walter Borner Slide Show on 'The Shannon'

Saturday 16th February 8.30 p.m.

in

The Jolly Mariner.

---oOo---

NEXT: Inland Waterways
Ruth Heard Film Show
During March, date next Aerial.

---oOo---

Branch News

Tercentenary Commerations

Peoples Regatta and Rally Moves afoot at present to organise a Peoples Regatta on the afternoon of Sunday 30th June.

This will be during Athlone's Tercentenary Commeration week.

Participating Clubs will include Aces and Rags Swimming Clubs, Athlone Anglers, Athlone Boat Club, I.W.A.I., Lough Ree Yacht Club and Athlone Sub Aqua Club.

A full programme is envisaged of fun and games, fishing competitions, boat racing, boat trips, sailing events and scuba display.

It is hoped to incorporate a Shannon swim, raft race and marine rescue.

The evening will culminate in a night reenactment of the Siege of Athlone and fireworks display.

The entire week promises to be great.

---oOo---

Relief Road Progress

Whilst the official opening of the new bridge is planned for June rumour has it that it will be in use by the end of March.

The commitment to provide jetty north of the new bridge is going ahead. Discussion in progress at present as to its exact location.

---oOo---

Pollution Particles

We categorised pollution under three headings as being chronic, intermittent, or occasional, but for practical purposes it might be more useful to list the different types of pollutant by the ways in which they affect the water into which they are released. Convenient categories are as follows.

(1) Deoxygenating (2) Suspended solids (3) Chemical (4) Thermal (5) Eurotrophication. These categories are not necessarily mutually exclusive, for example what would be listed under (1) might well also be listed under (2) for while the initial affect might be a fish kill, a long time result might be the destroying of spawning grounds by the silting of same. Similarly what caused eutrophication (5) in a lake may have an affect under a different heading in the stream which carries it down to the lake - turf mould would be an example.

---oOo---

Roving Reporter

My recent article on the River Suck appears to have attracted quite an amount of interest. Many of those who are contemplating making the voyage next season may be concerned about the clearance under the B.N.M. bridge. For the benefit of such readers I give hereunder a very simple method of calculating the clearance before setting off on the journey.

In my article I gave the following measurements:

"Crannagh" air draught 7'10"
Our clearance under bridge 4'5"

Therefore, the height of bridge above water = 12'3"

This at a time when, as you quite correctly stated Editor, the level over Lock Cill of Athlone lock was 7'9"

Now, the addition of the above 2 measurements gives a nice round and easily remembered figure of 20'. The significance of this figure of 20' is

that it is, by and large, a constant. Since if the level over the cill rises by, say, 1 foot, it can be reasonably assumed that the height of bridge over water falls by the same amount.

Therefore, before journeying up the Suck it is only necessary to ask (or phone) Athlone Lock for the level over the L.Cill. This figure, if deducted from 20' will give the height of bridge, and if one's own known air-draught is then deducted, one's clearance under the bridge is the result.

This simple formula can be stated as follows:

"20' minus lower cill minus air-draught of boat equals clearance"

Finally, in wet weather I would deem it inadvisable to proceed if the clearance were less than 1 foot, since one might not be able to get back the following day!

---oOo---

Light Madeira Fruit Cake

7 oz plain flour
2 oz self-raising flour
7 oz margarine (at room temperature)
7 oz caster sugar
4 eggs whisked lightly
1½ oz ground almonds
4 oz cherries, quartered, washed and dried
4 oz raisins
4 oz sultanas
2 oz mixed peel
½ teaspoon almond essence
1 or 2 tablespoons of whiskey or milk
flaked almonds for top (optional)

Place flours, margarine, sugar, eggs, gr.almonds in a bowl and beat together until well mixed. Add rest of ingredients and mix well with wooden spoon.

Fill mixture into the prepared tin and bake in preheated oven for 1 - 1½ hours until a warm skewer comes out clean.

Leave in tin for about two hours and then turn out.

Fleas make a meal of algae glut

Millions of water fleas known as "Norfolk Jaws" are to be encouraged to eat through a carpet of algae that is clogging the 45 acre Hoveton Little Broad.

The Norfolk Broads Authority will also use a massive dredger to suck hundreds of thousands of tons of polluted mud from the area and deposit it away from the clogged waterways as part of the £250,000 project.

Mr. Aitken Clark, chief executive, said; "The beauty of the little beasts is that they act as a water filter. We call them 'Jaws' because of their appetite".

Already the microscopic "Jaws" have eaten the eight acre Cockshoot Broad clean and for the first time in 30 years the water is pure enough for the White Water Lily.

ATHLONE AERIAL

Athlone Branch ,Inland Waterways Association Of Ireland
All Correspondence to: Athlone Aerial, Seans Bar, Main St., Athlone.

March 1991.

Next Branch Meeting.
Mon. 4th March 8.30pm
Sean 's Bar.

Happenings ;

We have had a most enjoyable night on the 16th Feb.
when again Walter Borner took a wide and varied audience on a trip down
a seasonal insight to our Shannon.

To Walter and Ruth
a sincere thank you.

Things don't happen, the're planned, then enjoyed, well done.

and now

on

Fri. March 15th 8.30pm

it's

Ruth Heard Film Show.

in

The Jolly Mariner

Remember this is the night where Athlone Branch is privileged to
have the foremost authority on our Inland Waterways share footage of
then and now.

&

Presentation of the Harry Rice Cup Competition

&

Ladies dont forget , bring the cakes and cream and chocolate and

00000000000000000000

SUB'S NOW DUE, PLEASE REMIT £10 TO HON. TREASURER
SEAN FITZSIMONS
SEAN'S BAR
MAIN ST ATHLONE.

Subs already received will be receipted with April Aerial .
The rest will get the dreaded red X .

MEMBERS NOTICE :

The draft of the Shannon Bye Laws have just arrived.
A meeting with the Office of Public Works is scheduled for around the
end of March to put forward our reaction to what is imminent " LAW "

To process our position there is the following procedure
Branch Extraordinary General Meeting
Sat. 16th March
11.00 Jolly Mariner.

Agenda ; Shannon Navigation Bye Laws.

Act now, copies of the Bye Laws available from Hon. Sec. c/o Sean's Bar.

Sympathy:

On behalf of the Inland Waterways we take this opportunity to extend our sincere sympathy to the Pigott family on the recent death of Bernie, late Secretary of Athlone Cruisers and kind friend of us all.

Pollution Particles

Categories of Pollution (1) Deoxygenation

In natural surroundings there is no such thing as pure water. The only pure water that most of us have ever seen is in a phial about to be used by the doctor in mixing an injection. Even the cleanest of water in the natural environment can be said to be polluted as it contains oxygen, nitrogen and carbon dioxide which it has absorbed from the atmosphere, while calcium, magnesium, iron sodium, phosphate, nitrate and the like are absorbed from the land in the catchment area. These elements in normal quantities are not regarded as pollutants, indeed it is their presence which makes the water capable of supporting life, and the proportions in which they are present determines the quality of the water, whether it is alkaline and rich, or acid and poor.

Now, as anyone who has ever mucked about at the edge of a lake will know, any body of water supports a vast array of life, from the lowly amoeba right through to the sophisticated salmonide, as well as an astonishing variety of plant life, and the whole is woven into a quite miraculous ecological system, that is to say, a system in which each has a part to play, and in which if one link in the chain becomes weak or over emphasized the character of the water is altered and we say that the balance of nature has been upset. Perhaps the most important link, and one which cannot be seen with the naked eye, is the bacteria present in the water, whose job it is to deal with what is dead or dieing and cause it to decompose, so that it can be re-cycled and its raw materials put back into circulation to continue the process which has been going on since life began.

oooo 000 ooo

Rally News.

Shannon Rally 1991

Commodore Frank Farrell.
V. Cmmdr. Denis Treacy.

Itinerary ;

Fri. 26th July.	Athlone & Carrick.
Sat. 27th	Lanesboro
Sun. 28th	Hudson Bay.
Mon. 29th	Lough Ree Yacht Club.
Tues 30th	River Suck.
Wed. 31st	Banagher.
Thur. 1st	Banagher.
Fri. 2nd	Shannonbridge.
Sat. 3rd	Athlone.

Remember.	June	22nd & 23rd	Shannon Harbour Canal Rally.
	June	29th & 30th	Slaney Rally.

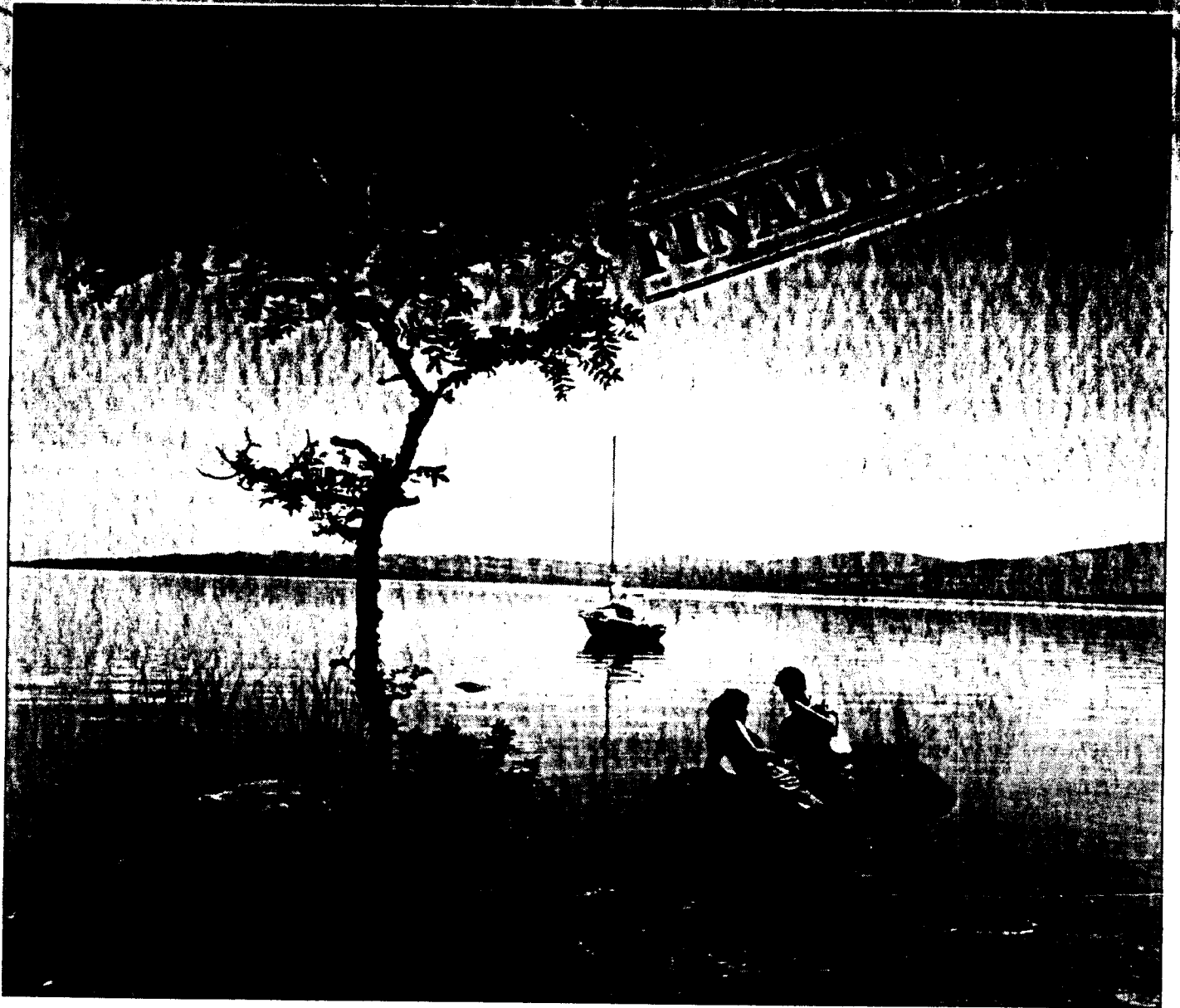
But
The Real Thing
is
Athlone's

Tercentenary Commeration
JUNE 29th & 30 th Rally .

Sorry David , it won't happen again for another 100 years. William.

Lough Derg

— an International Water Park



PROPOSALS PREPARED BY THE
LOUGH DERG WORKING GROUP, 1990

Action Proposals

The priority recommendations for short-term action are as follows:

Action	Responsible Agency	Cost
<u>Lake Management</u>		
Implement coordinating structure	Working Group	
Clean up algae (weeds) around lake	Local Authorities	
Reduce boating congestion: enforce maximum stay of 3 days at public harbours	Local Authorities/ Office of Public Works	
<u>Visitor Services</u>		
Expand boating facilities at strategic locations	Office of Public Works	£850,000
Establish visitor information office at Killaloe	Shannon Development	£6,000
<u>Environment</u>		
Complete short-term study on major factors affecting water quality	Commissioned by Working Group	£70,000
Ensure that cruising craft have sewage holding tanks; provide on-shore pump-out facilities	Local Authorities Shannon Development; Cruising Operators	£150,000
<u>Marketing</u>		
Publish brochures and marketing material	Shannon Development	£25,000
<u>Fishing</u>		
Survey lake fisheries and fisheries in tributary rivers/ streams	Shannon Regional Fisheries Board	£160,000
Promote the establishment of angling schools	Shannon Regional Fisheries Board	



ATHLONE AERIAL

Athlone Branch, Inland Waterways Association Of Ireland
All Correspondence to: Athlone Aerial, Seans Bar, Main St., Athlone.

April 1991

Next Branch Meeting.
Mon. 3th April
3.30pm
Sean's Bar.

A RED X IN THE BOX MEANS THAT ACCORDING TO OUR RECORDS YOU ARE HOLDING BACK ON YOUR SUBSCRIPTION, NOW, THERE ARE ONLY A FEW OF US THAT HAVE THAT FACILITY. PLEASE REMIT £10 TO HON. TREASURER.

Shannon Navigation Act 1990 & Bye-Laws.

The Inland Waterways Association of Ireland regard as foremost the continued freedom of the People of Ireland to use to the fullest extent as a National amenity the Shannon River and her tributaries.

Whilst retaining the tradition and the non exclusiveness of the Shannon the I.W.A.I. recognise the need for legislation to control the abuse of berthage at harbours and quays during high traffic periods.

The introduction of such legislation and resultant officialdom should be kept to a minimum and every encouragement should be afforded the individual right to use this great waterway.

The proposed Bye-Laws are all embracing with far reaching powers over all aspects of the Navigation, its use and craft thereon. These powers include enabling authorised officers to stop, board and remove craft from the navigation.

All parties are in broad agreement as to the main difficulties that are adversely affecting operations at present. That is the need for a facility to identify ownership to pursue abuse of berthage at public quays and harbours. The availability of this information is fully supported by the I.W.A.I. Agreement as to reasonable duration of stopover at such facilities can also be reached.

However the Bye-Laws as presented endeavour to cross all T's and dot all I's. Why?. Because all systems of bureaucracy operate this way.

There are several interested parties,
The Office of Public Works who wish to dictate the play.
I.W.A.I. and I.Y.A. who wish to preserve the freedom.
I.B.R.O. who wish to have access to as much facility as possible for their
operations
Anglers who will see this as a further tightening of the net.

Here is a chance for imagination, good will and commonsense. Let us find common ground, let us all compromise, but let us not turn this great waterway into a peaked cap toll road experience destined to be only for those that are well heeled.

Extracts from the proposed Bye-Laws.

<u>Charges:</u>	Registration	No charge.
	Lock passages	
	& opening bridges	£1 (50p B&B Canal and L. Allen)
	Mooring at State	
	Quays & Hbrs etc	£10 per metre 1st Oct to 1st May.
	Dry Dock	£100 for 1st 3 days ,thereafter £11 per day

Main Bye-Laws

Registration will be required with annual renewal by all vessels

Registration. A vessel is defined as all craft other than a boat.

A boat is defined as ; an open or undecked punt, canoe, skiff, scull, row boat or other such boat designed primarily to be propelled by oars or sail and not propelled by an engine of more than 10 hp

Powers of Authorised Officers. Board and inspect a vessel or boat and may, for the purpose of boarding it stop a vessel that is under way.

Powers of Commissioners The Commissioners may give to the owner of a vessel or boat such directions as they consider reasonable for the purpose of their powers, functions and duties under the act and these bye-laws and the owner shall comply with any such direction.

Competance of Crew. The owner of a vessel shall not navigate or permit the navigation of the vessel unless

a) the master is competent to do so.

Alcohol and Drugs. Persons who are under the influence of alcohol or drugs to such an extent as to have their capability to navigate or have proper control of a vessel or boat impaired shall not -

a) Navigate a vessel or boat

Navigation. When vessels or boats are in sight of each other the master of a vessel or boat intending to alter course or go astern shall, before doing so , indicate that intention as follows

a) if he intends to alter course to starboard, he shall give one short blast on a whistle. etc.

Mooring and use of Harbours A vessel or boat shall not berth at the same harbour, lay-by, wharf, quay, pier or other landing-place or other property of the Commissioners for more than 2 consecutive days or more than a total of 3 days in any one week without the permission of the Commissioners.

Placing of Buoys. Subject to bye-law 19, a person shall not place in the navigation a buoy, perch, marker, mooring or mooring post without the permission of the Commissioners or an authorised officer.

Animals on the Navigation. A person shall not turn an animal loose in ,or permit an animal to stray into the navigation without the consent of the Commissioners

Miscellaneous prohibitions A person shall not -

- a) bathe or swim in or in the approaches to any lock harbour or dock in the navigation without the permission of the Commissioners.
- b) wash an animal or any motor car or other vehicle or any article or thing in the navigation.
- g) extract water from the navigation (other than for the purposes of cooling th engines of vessels or boats) except in accordance with a licence under paragraph (2)

Extracts from Bye-Laws(continued)

Construction of Vessels.

Anchors, mooring lines
and fenders ; A vessel shall be equippe with bow and stern mooring
lines appropriate to its tonnage and lenght and of
sufficient length and tensile strenght to moor it safely
The minimum lenght of such lines shall be 15 metres
and their minimum diameter shall be 12 mm of nylon or
16mm of polypropylene.-----

Life -saving equipment.

3. A vessel shall carry not less than 6 pyrotechnic
distress signals and 2 buoyant smoke signals.-----

Outboard Engines.

3. If the fuel,tank of a vessel is seperated from
the engine and is connected to it by flexible
piping, modifications shall not be made to the
tank or piping unless they are authorised by the
supplier or manufacturer and the tank shall be
refilled only when it is removed from the vessel.

Holding Tanks.

12 1 a) A vessel with a fitted toilet shall be
equipped with a holding tank for effluent
and the tank shall be of adequate size
and have attached to it fittings to enable
it to be emptied at pump out stations.
b) This bye - law to come into affect on
--- day -----1991.

There y'are now.

For Sale Laser Sailing Dingy complete with sails. £550. 0902-72453, office.
72639 evenings.

Wanted. 2 Adult Buoyancy Aids.
2 Childrens Size (9yrs) 0506-31106.

Ruth Heard's Film Evening and Harry Rice Competition.

Thank you Ruth once again for what has become a real family affair.
The programme included footage from 1989-90 with the Ballinamore and Ballyconnel.
Ulster Canal and the Royal Canal Rally. The archive film from 1976 of the
Naas Canal, Tullamore Rally and the Shannon Rally.

The evening which was well attended saw the Dunross clear the decks in
the Harry Rice Competition. Congratulations one and all.

A special thanks to Ruth, to Bridie and the Girls for the delicacies,
to Rosemary for competition organisation and to Cynthia for presenting the
awards.

Harry Rice Cup Competition Results

Overall Winner ;	Miss Oona Heraghty	aged 6	Painting ;	Bar-b-q in the Cut.
Snr Section ;	1st Donal Heraghty	Essay	Exploring the Upper Shannon	
	2nd Niamh Heraghty	Painting	Ballinamore & Ballconnell Canal	
Jnr Section ;	1st Oona Heraghty			
	2nd Mark Casserly	Essay	A day on the Corrib.	

Harry Rice Cup Results (continued)

Jnr Section 3rd Ann Cambell aged 10 Painting Welcome to the
Highly
Commended Earla and Jillian Kelly
aged 5 & 8 The Shannon
Illustrated Essay.

Well Done.

Boat Show Report 1991

The Boat Show for this columnist started on a sour note when we were asked for £2.00 no less just to park the transport in a yard littered with rough stones, pools of water and railway tracks and in which the parking was so chaotic that getting out was the equivalent of being in a maze. Stepping inside we found that the escalator had been giving trouble most of the week and when it was working it was going down instead of up! That gallery is very high up in the sky!

However, these feelings soon dissipated when we looked at the show. This, the second at the Point Depot in Dublin, was bigger and better than ever. This was immediately obvious up in the gallery which this was packed with stands (compared to '89). Our first stop was the I.W.A.I. display and its sister stand the R.C.A.G., next door. The I.W.A.I. stand was bright and interesting with good photos of waterways and activities from all over the country. Athlone was prominent (as usual), Sean Fitzsimons had on display a lovely 3' long model of a Galway Hooker which is being raffled in aid of the Tercentenary Week Committee, while this same celebration was the theme of a nice poster advertising our Cruise-in-Company at the end of June.

So, having got the commercials out of the way, what else was to be seen? Items of direct waterways interest included Celtic Canal Cruisers where Heather Thomas was bringing in a new narrow boat and had it moored right outside in the Liffey, while Brian O'Reilly of Lowtown Marina was reported to be very pleased with bookings. We met Tom Maher who was helping out Kennedy Int.Boats with their new "Aisling", but the bad weather was deterring visitors from venturing out to the waterside, certainly for the first 2 or 3 days. Grainne and Ken Simmonds were prominent, the former resplendent in full Scout uniform and encouraging use of the Scout Aqua Adventure Centre on L.Derg. We promised to pay a visit. Ken, by the way, is now building steel boats.

One interesting stand was the Met.Office where we chatted with the friendly stars of Radio and T.V. We tried to impress on them the advantage (to us) of an inland area forecast during the season. They promised to report back to H.Q., and were a bit surprised that their sea area forecasts were so much used inland. We also bumped into our former Chairman, Berchs Hannin, who sends his kind regards to all in Athlone.

What else was to be seen - boats, chandlery, engines - great stuff if you came to buy and brought your cheque-book. Upstairs, we gazed in awe at Magic Polish Window Cleaners, Vegetable Choppers and a helicopter (which you could have for only £90,000). A kindly word of interest at the Baltimore stand earned us a big bag of fresh mussels for free! Kilrush Marina had a huge stand and have committed themselves to an April opening. Signs on it, there could be a big fleet from the R.Shannon visiting them this summer (weather permitting).

So, as we walked out the door, what was the abiding memory of the Show? Well, sentimentalists and traditionalists that we are, it had to be the sailing dinghies all types and sizes, lovingly prepared and polished by enthusiasts - a relatively inexpensive way of getting on the water and enjoying good company. Isn't that what boating is all about! R.R.

A.G.M. Report next issue.



ATHLONE AERIAL

Athlone Branch ,Inland Waterways Association Of Ireland
All Correspondence to: Athlone Aerial, Seans Bar, Main St., Athlone.

May 1991.

Branch Meeting.
Mon. 6th May.
Seans, 8.30

A Code of Practice.

The season is upon us, up and at it.
The discussions on the Bye -Laws will soon take place between all the interested parties. The final outcome of these negotiations remains to be seen. However you can be assured that every effort will be made to achieve a sensible workable formula.

Irrespective of the outcome there is a code of practice whilst not written is expected .

Good boatmanship.

There are various demands on the network, they vary up and down the river depending on traffic levels and facilities available.

Let us all examine our code of practice.

At the end of the day public facilities are for all of us generally and none of us specifically. The object of the exercise is to allow maximum use.

Turning away visiting craft in late evening for unknown destinations is not only bad boatmanship, it's criminal.



Dates to remember;

- Athlone Branch Whit Rally
1st June. Lecarrow.
- Athlone Regatta 15th June, Coosan Point.
- Peoples Regatta & Tercentenary Cruise, 28th- 30th June



Fitzs say's ;

1. Xcellent response on membership renewal. One or two little fish yet.

----- -----
----- ----- Herring, sub due.
2. If tickets enclosed for Tercentenary Heineken Hooker please flog and return before June Aerial.

Thanks.

Sensational Discovery of Canal

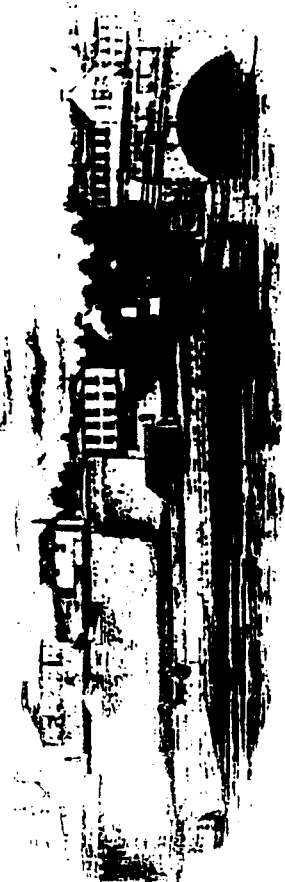
As your Reporter was roving recently around our County of Westmeath he crossed a bridge - a nice small hump-backed bridge. As every waterways person should do in such circumstances he slowed down and looked right and left (if you do this often enough, one day you will see a boat coming!). Yes, as suspected it was a canal, definitely not a river. As we were within a few miles of Mullingar, so what? It had to be the Royal! Except that one mile back we had already crossed the Royal and this canal appeared to be heading for Lough Ennell.

With mounting puzzlement (and eventually excitement) we stopped, walked back, checked the facts, and then pulled out our $\frac{1}{2}$ " Ordnance Survey Sheet No. 12. There was Mullingar, here L. Ennell and there the thin winding line of the River Brosna - and yes, there beside it a thicker blue line running from just S.W. of Mullingar to L. Ennell clearly marked "Lacy's Canal" (Sensation, applause - and a rise in salary for your Reporter)

But who was Mr. Lacy? why did he build his canal and when? The R. Brosna does appear to join it before L. Ennell and so to that extent it is a canalised river, but the canal clearly makes a separate course towards Mullingar. Was it part of a grandiose scheme to make the Brosna navigable or had Mr. Lacy some interests on L. Ennell that required easy transport to Mullingar? Can any reader fill in the missing details - the Aerial eagerly awaits further developments.

One final note - when your reporter interviewed Ruth Heard and asked for her comments, she stated that she would of course be bringing out a new edition of "The Canal of the South of Ireland" as a matter of urgency.

Athlone Tercentenary Committee



HEINEKEN

PEOPLES REGATTA RAFT RACE

Sunday 30th June 1991

THE CHALLENGE:

Propel a homemade raft over a mile and a half course from Shancurragh to the promenade.

THE CATEGORIES OF RAFT:

- 4 Crew
- Unlimited Crew
- Ladies Crew
- Most original raft
- Best dressed raft

THE CREW:

- (1) Minimum crew - four persons
- (2) All crew must wear buoyancy aids or life jackets

ENTRY FEE:

£20.00 per raft

PRIZES:

Prizes for each Winning Category and all Teams participating will receive a plaque.



ATHLONE AERIAL

Athlone Branch Inland Waterways Association Of Ireland
All Correspondence to: Athlone Aerial, Seans Bar, Main St., Athlone.

June 1991

The next Branch Meeting and Aerial in September.

Branch News

Castle and Quayside Development

The development work at the Castle and its environs is now in full swing to be ready for the Tercentenary Festival at the end of June.

The project costing in excess of £800,000 is a fitting tribute to individual foresight and the combined effort of agencies at both local and national level.

Athlone is looking good.

We hope that negotiations between the local authority and Shannon Navigation will see the removal of the O.P.W. shed. In the context of the quayside this will be the icing on the cake.

Shannon Navigation Notice

As of Tuesday July 4th the normal summer berthage regulations are operative. Long term berthage should be discontinued from that date.

Diary

June 15th.....Athlone Regatta
June 22nd 23rd.....Shannon Harbour Rally
June 28th 30th.....Athlone Tercentenary Cruise
June 29th 30th.....Slaney Rally
June 30th.....Athlone Peoples Regatta
July 12th-15th.....Corrib Rally
July 26th-Aug 3rd...31st Shannon Boat Rally
Aug 5th-10th.....Lough Derg Rally

N.B. Tercentenary Festival June 23rd - 30th

Reminder Any outstanding raffle tickets to Sean, please.

For Sale

BIC 210 sport Wind surfer. Board, sail
and wet suit £350
phone: 0902 74703

Report

Shannon Guide This has now been put on a computer data-base and a new edition is being printed. However, this is a special order for I.B.R.A. and will only be suitable for hire-boats (lack of information needed by private boats, hatching, no-go areas, no R.Suck map etc.etc.) Negotiations are continuing to reach agreement on a comprehensive version for I.W.A.I. members.

Grand Canal A Maritime Visitor Centre is presently being established at Gr.Canal Basin. O.P.W. hope this will set a headline for restoration of the area. Ruth Heard has been acting as consultant.

Killaloe Lock-house has been demolished and work commenced on a 3 storey(!) replacement building for a Heritage Centre. Due to I.W.A.I. and local protests work has now ceased (!) and it is hoped to keep the building down to one storey.

Oakport Lough I.W.A.I. has been asked for its support to overcome planning objections to a new private-boat commercial marina just north of this Lough.

Shannon Forum A meeting is to take place with the Minister to seek funds to do selective drainage between Athlone and Meelick. On this occasion the agenda is agreed and the delegation is more balanced and includes Declan Walsh.

New Shannon Bye-Laws Eddie Slane announced that they have secured a grant of £100,000 for O.P.W. to do dredging on the Longford section.

Next Meeting 13th September.

Down Memory Lane
(from the archives of the Aerial)

"There's talk of boating to Ballinasloe, perhaps local branches could have a serious look at this possibility. Big and all as the waterway is, the adventure seems to have subsided after all. our years of foraging. Perhaps there's still some work like the late Harry Rice used to do, the odd can or stout branch to guide the adventurer! - Athlone Aerial September 1977.

"Three cheers for Terance Mallagh and his helpers. The 1st Lock Naas Branch is now in working order and was test filled a few weeks ago. Gates were patched, racks replaced and chambers dredged. They are hoping to hold an historic Rally there on St.Patrick's Day week-end. On to the 2nd Lock!"
Athlone Aerial- Canal Dribbler -Dec 77

"Sean and Maeve Matthews are leaving town to join the O'Riordans in Alicante and onwards to a safari to North Africa to Marrakesh. Pub spy has it Sean is bringing his bucket and spade. Are the Foreign Legion looking for recruits? Just an idea. Oh! but what a lovely one!

Athlone Aerial - Social News Dec. 77

Apple Ginger Cake

1 packet of ginger biscuits
 1 tablespoonfull sherry
 A little lemon sugar
 Cream to decorate
 stewed apple

Take a flat plate and arrange one biscuit in the middle and six round it. Brush each biscuit with sherry (I usually dip biscuits in the sherry which I put on a saucer). Put a couple of spoons of apple sauce on top and add another layer of biscuits, sherry and sauce. Top with another layer of biscuits and cover with whipped cream and a little lemon sugar.

To make lemon sugar finely grate the rind of a lemon and mix in 2 tablespoonfuls of granulated sugar. Spread it out to dry and then store it in a airtight jar for the decoration of puddings and cakes.

Pollution Particles

Deoxygenation (cont)

As has already been noted, when in the natural course of events plant and animal life in water, the water is cleansed by bacteria which cause the waste to decompose and so be re-cycled and become the raw material of the continual process of growth, life and death. In doing this work of decomposition the bacteria consume oxygen, which in normal good quality water is in a solution of about 10 parts per million by weight, and at this level is a saturated solution. All forms of aquatic life consume oxygen, but under normal circumstances a balance is maintained (a bit complicated to discuss here) so that the water remains unpolluted. indeed in a river or lake where no extraneous pollution is present there is no problem. and the amount of oxygen consumed by what might be called the cleansing department causes no noticeable reduction in the oxygen content. Now the amount of oxygen consumed by the bacteria or cleansing department can be measured. Again for our purposes how this is measured is not important, but it is called the biochemical oxygen demand, or B.O.D. for short.

On behalf of the Chairman and Aerial Staff we take this opportunity to wish everyone happy boating till September.



General Information

This Cruise-in-Company is part of the Inland Waterways' participation in the week-long celebration of the Tercentenary of the Siege of Athlone.

During the week Athlone will be en-fete, commencing on Sunday 23rd June with a Grand Parade through the town. Other events during the week will include the official opening of the new bypass bridge, boat-on-the-street, entertainment, exhibitions, celebrity concert, tours etc. The Peoples' Regatta on Sunday 30th includes swims, raft race, floating jazz band, helicopter rescue and lots more. Your participation in the watersports fun events will be especially welcome.

On the Cruise-in-Company we have arranged an appropriate historical talk by Harman Murtagh, a distinguished member of the Old Athlone Society. The wine & cheese party and the coffee morning are included in your entry fee, as of course will be the souvenir plaque which every entrant will receive.

The barbeque (which will include veg. & dessert) will be an extra charge, as this is being provided by Lough Ree Y.C., to whom we are much indebted for their help and co-operation. Bar service will, of course, be also available in their clubhouse. Bring your own grub for the picnic on Saturday afternoon.

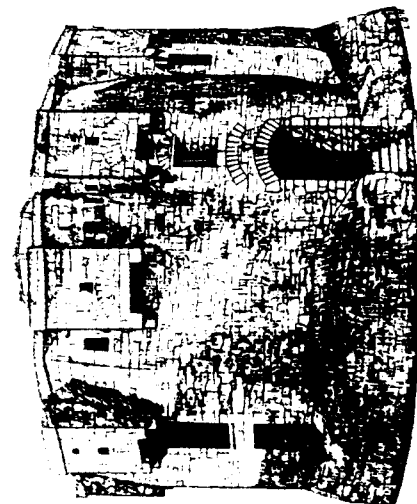
In the event of adverse weather conditions, arrangements have been made for alternative locations for certain events.

We look forward to seeing all our members and friends at the end of June.

Closing date for entries is 14th June, since for both administrative and catering reasons, we must know well in advance how many will be taking part.

Send entries & £10 fee to:

Ruth Casey, M.B. "Snipe", The Watergate, Athlone.



Athlone Castle Keep and Museum

Send entries, accompanied by £10 entry fee, to:

Ruth Casey

M.B. "Snipe"

The Watergate

Athlone

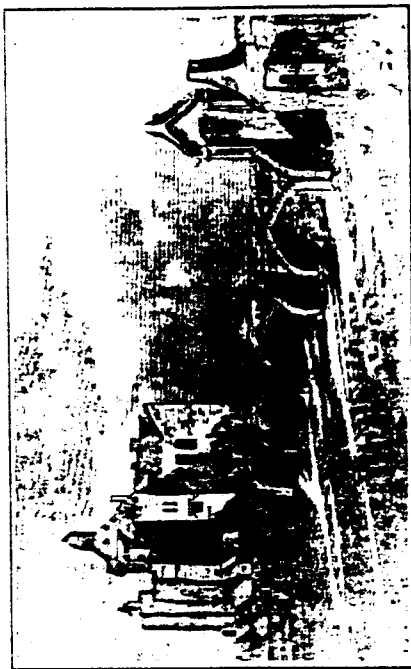
Inquiries and further information:

Ruth Casey

Reggie Redmond

Declan Walsh

Siege of Athlone Tercentenary



CRUISE - IN - COMPANY

28th - 30th June 1991

CHAIRMAN: Declan Walsh.

HON. SEC.: Ruth Casey.

CO-ORDINATOR: Reggie Redmond.

Organised by Athlone Branch, Inland Waterways

Association of Ireland as part of the

Tercentenary Commemoration of the Siege of Athlone.



ATHLONE AERIAL

Athlone Branch ,Inland Waterways Association Of Ireland
All Correspondence to: Athlone Aerial, Seans Bar, Main St., Athlone.

September 1991

Hello again, and didn't the season turn out just grand, erasing the poor start and mediocre middle. The auld seasons are up in a heap, it wasn't the town dump after all.

Branch meetings resume next Monday 9th September
8.30 p.m. Seans Bar

It has been a good year for Athlone, the town dump relocated, a new relief road and bridge and a new old castle. All major events and welcome additions to our riverside town. Congratulations to all involved particularly our elected representatives and our local authorities.

The recent government announcement to appoint a working group of interested parties to study how best to market and develop the Shannon into what is now regarded as the countrys single most important asset is to be welcomed from a commercial point of view.

Great care must be taken to maintain the highest possible balance between all such development and the preservation of the natural beauty of our river. Let there be a policy derived from discussion, debate compromise and agreement. Let us ensure that voluntary agencies are a voice in this debate.

The consultations on the Shannon Bye-Laws are due to resume again shortly. Considerable agreement has been reached to date. However there remains some areas that are still unacceptable. Every effort has been made to enable the bye laws to allow effective management of the waterway.

It is essential that agreement be reached as promised at the outset of these discussions. Any attempt to push through without such agreement should be met with the appropriate action. This is no game, this is serious business.

Diary;

Athlone Branch End of Season	
Supper Dance	Fri. 27th Sept.
&	
Rally to	Sat. 28th
Shannonbridge	Sun. 29th

Tercentenary Cruise - in - Company.

A super entry of 61 was received for Athlone Branch's contribution to the Tercentenary celebrations. They came from all over - a very welcome fleet from Carrick-on-Shannon, boats from Shannon Hbr, Dublin Branch members and of course Athlone Boats from all around Lough Ree. We were honoured by our President Damien Delaney (who went to the trouble of dropping his mast to come into Athlone on Sunday), Shannon Rally Commodore Frank Farrell and Secretary Marie brought down the " H. Blacksmith ", while Ruth Heard on " Harklow " had a most distinguished crew which included Barbara O' Hanlon and Alf Delany. Tom Maher even came down by car and Walter and Ruth Borner flew over especially from Switzerland.

Friday evening in Hodson Bay was the scene of the Wine and Cheese. The night was fine, the wine disappeared bottle by bottle and the party went a bomb. The memory of that night was to help us through the following day when it rained and rained until early afternoon. The coffee "morning" was held at 3 p.m., Harman Murtaghs historical talk was postponed until evening and the picnic was a non-event!

However, on arrival at L. Ree Yacht Club things began to look up. The rain had stopped (almost) and Harman's talk (to a packed audience) was entertaining and interesting, delivered in his usual sparkling style. Commodore John Keane and his members hosted a generous hot-punch reception and a fine Bar-B-Q followed. A musical evening topped off a surprisingly enjoyable day.

Sunday morning started with an Ecumenical Service by Archdeacon Cave and Fr. Sean from Coosan and then came the grand entrance to Athlone - The "flotilla of boats" as the Tercentenary programme had it. And what a sight it was 2 files of boats of all sizes and types as far as the eye could see, bunting flying, horns hooting and bells ringing they swung into moorings at the new jetties. The Cruise-in-Company was officially over.

The rest of the day belonged to the Tercentenary Committee and what entertainment they provided - swimming, water sports, a raft race, a dramatic helicopter rescue, music and in the evening a memorable re-enactment of the Siege by the Defence Forces.

The week-end was completed with a dramatic fire-works display from the centre of the river. It was a Cruise not to be missed and now in Athlone they're talking about having a Tercentenary every year!

Found At the new jetties in the Town on Sunday 30th June during the Tercentenary Cruise - a black leather Camera Cover marked "Asani Pentax" Apply Reggie Redmond on "Crannagh" or phone 01-555329

Shannon Boat Rally 1991

The 31st annual Shannon Rally was voted by all 54 entrants to have been a great success, and under the leadership of popular Commodore Frank Farrell, ably assisted by hard-working Secretary Marie Hyland, it went the proverbial "bomb". The weather also smiled and, although not brilliant, was one of the best consistent weeks for the past month.

The gathering of the 2 fleets at Lanesboro was the scene of the Sat. evening Mass followed by the traditional Wine and Cheese party. The Mass was notable for some fine choir singing led by Sean Matthews, although they resisted the temptation to sing "A-a-ah -men" followed by "the Athlone Boys"!

Serious (and not-so-serious) competitions then started in earnest, and after a visit to Hodson Bay, the Rally moved across to Lough Ree Y.C., on Monday. Here we were hosted to a "Hot Punch" reception by the Club and generally made very welcome. The childrens' and the adults' Talent Contests revealed some remarkable professional (and humourous) expertise.

Tuesday and the visit to the River Suck just had to be the highlight of the week. Here, for the first-ever event of its type that the Suck had seen, over 50 boats tied up to the stakes at Correen Ford thoughtfully put in position by Declan Walsh. The historic occasion was marked by an official visit from Minister of State Noel Tracy T.D. and at a champagne reception on the banks of the River, hosted by Ballinasloe Chamber of Commerce, he pledged that the navigation would be opened all the way to Ballinasloe by 1993. All entrants expressed themselves surprised and delighted at the size and depth of the Suck. The stakes have been left behind for visiting boats - lets hope they remain there

Then it was down to Banagher for 2 nights for Fancy Dress Comps., R.N.L.I. Auction (£650 raised) and the conclusion of the many competitions. The young folk enjoyed the jumping castle.

Saturday morning at Shannon-bridge saw the distribution of most of the awards, and with Padraic) Brolchain, Donal O' Siochain, Coror Furey, Denis Moffett and Kieran Walsh all Sharing the spoils of the major competitions, speculation was rife as to the winner of the coveted Premier Award.

The Closing Donner was to reveal all and Athlone resounded to the cheering when overall winner was declared to the popular local skipper Conor Furey in his traditional boat "Aloma".

The rally was slickly run with lots of good humour, generally voted an improvement on last year. The only complaint perhaps being that Banagher is a bit too far down river, also posing mooring problems at the hire-base jetties.

After the Suck - what next?

Lough Scur?!

Sympathy :

On behalf of our membership we extend our deepest sympathy to the families and friends of Willie Watson, Paul Chapman and Mrs Coffey who died in recent weeks.

SHANNON BOAT RALLY 1991RESULTS

<u>Premier Award:</u>	Conor Furey	(Aloma)	589	marks
2nd overall	Donal O Siochain	(Iron Lady)	561	"
3rd "	Padraic O Brolchain	(Barcarole)	558	"
" "	Denis Moffett	(Lady G)	"	"
5th "	Kieran Walsh	(Shantrek)	544	"
6th "	Margaret Murphy	(Corbiere)	498	"

CRUISER CLASS

1st	Donal O Siochain	(Iron Lady)
2nd	Padraic O Brolchain	(Barcarole)
"	Denis Moffett	(Lady G)

BARGE CLASS

Kieran Walsh (Shantrek)

INSPECTION OF BOATS

1st	Margaret Murphy	(Corbiere)
2nd	Pam Wenger	(Mirabooka)

MOORING

1st	Kieran Walsh	(Shantrek)
2nd	Padraic O Brolchain	(Barcarole)

NAVIGATION

1st	Padraic O Brolchain	(Barcarole)
2nd	Denis Moffett	(Lady G)

RESCUE OF CRUISER

1st	Des Gillett	(Lazy Bones)
2nd	Donal O Siochain	(Iron Lady)

TIME RELIABILITY

1st	Des Gillett	(Lazy Bones)
2nd	Conor Furey	(Aloma)

MAN OVERBOARD

1st	Denis Moffett	(Lady G)
2nd	Kieran Walsh	(Shantrek)

1st MATE

1st	Michael Lynch	(Aloma)
2nd	Andrew Moffett	(Lady G)

LADIES BOAT HANDLING

1st	Fiona Furey	(Aloma)
2nd	Suzanne Wenger	(Mirabooka)

VISITORS AWARD

(Mirabooka)

BOAT BY CANAL

(Aloma)

BODERG SAILING RACE

David Hillean (Gillaroc)

BACARDI SAILING RACE

Harry Donegan (La Giaconda)

DOUGH REE SAILING RACE

Harry Donegan (La Giaconda)

YOUNG MARINER AWARD

Orla Canavan (Lady Rona)

WATERWAYS QUIZ

Rosemary Furlong (Francesca)



ATHLONE AERIAL

Athlone Branch Inland Waterways Association Of Ireland
All Correspondence to: Athlone Aerial, Seans Bar, Main St., Athlone.

October '91.

Next Branch Meeting Monday 17th October 8.30 hours.

ATHLONES END OF SEASON

The Bash
Friday 27th Sept.
Jolly Mariner
9 p.m.
Tickets Advise
Seans



Tercentenary
Hooker
Draw
Return All
Tickets

The Rally

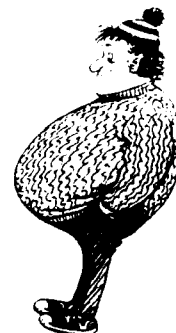
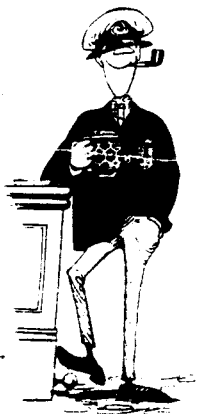
Sat. & Sun. 28th & 29th Sept.

ITINERARY

BUT

NO BUTS
Shannonbridge

JOINT COMMODORES



I.W.A.I. National Council Meeting - Mullingar 19th September 1991

A report from the Athlone Branch delegates

Pump-out facilities - The proposals from the Department of Environment do not appear to cater for boats with Port-a-Potties or to include ordinary W.C.'s. Council is to again request a meeting to discuss these matters.

Royal Canal - R.O.A.G. report that railway crossing at Sheriff St., may not be ready until late next Spring. No decision made yet concerning a rally from Liffey to Mullingar.

Shannon Authority - Letter from An Taisce wishing to set up a working party to consider feasibility of this item. Ruth Heard and Declan Walsh to attend as observers. Council made no decision as to whether or not we favour such an Authority.

O.P.W. Bye-Laws - This matter is rapidly reaching finality with a final draft expected soon from O.P.W. Three items of contention remain:-

1. Registration - O.P.W. appear to be insisting on an annual registration, which they state will be free. Our Executive were instructed to accept this only if the free "no charge" registration is included legally in the Bye-laws. If not, matter must be referred back to our membership for decision on possible lines of further action.
2. Mooring - Winter (Oct. to April inc.) £10 per metre is proposed by O.P.W. Summer - 5 consecutive days with a maximum of 7 or 8 days per month. Council instructed that a reduction of the Winter charge should be obtained.
3. Registration Form - as drafted includes a declaration that one's boat complies with the regulations in the "Construction of boats" bye-law. The Executive was instructed to demand that this be removed, otherwise matter must be referred back to membership to decide on our future attitude and action.

Shannon - Erne Link (B & B Canal) - Tom Maher gave most interesting progress report on this project. Work is "all - go" along the entire length, with yellow machines beavering away as far as the eye can see. Incredibly he says the navigation from Leitrim to Lough Scur (8 locks) will be finished and open by next June, with a similar possibility for the stretch from L.erne to Ballyconnell.

Ulster Canal - Ian Bath reported that he has spent many further weeks surveying this and has succeeded in interesting various groups and authorities in this project. It sounded like an item that is not going to leave the Agenda.

Blackbrink Bay - The development of chalets has received planning permission. This will be appealed by An Taisce with support from Athlone Branch.

Next Meeting - 29th November 1991



ATHLONE AERIAL

Athlone Branch Inland Waterways Association Of Ireland
All Correspondence to: Athlone Aerial, Seans Bar, Main St., Athlone.

November 1991

NOTICE OF A.G.M.

Members please note

The Annual General Meeting of Athlone Branch
Inland Waterways Association

Friday 6th December 8.30 p.m. Jolly Mariner Athlone

The A.G.M. as usual will deal with reports, election of Branch officers and committee for Shannon Boat Rally 1992. Members are requested to give due consideration to these nominations.

--oOo--

November Branch Meeting Monday 4th November 8,30 Seans

--oOo--

Navigation Notice

The Office of Public works have advised us that to carry out essential repairs the 36th Lock (Shannon Harbour/Shannon) will be closed to navigation from 29th October for 3 weeks.

--oOo--

End of Season Report

The Annual Dinner was, according to Walter, more like breakfast at Tiffanys!

The raffle for the model Hooker Tercentenary Draw was won by the Bridge Bar, Baylough, congratulations. Well done Heineken, well done Sean.

By the way, will the couple who had the free meal please cough up.

It was nice to see the Corrib people back again after such a long absence(sic)(joke)

The rally south eventually got through the lock and included Banagher in their itinerary.

The weather scattered the Ree siders.

Shannon Forum

The first meeting since May was held on 22nd October.

A presentation was made by Dr. Charles McCorkell of Dublin City University and Mr James Coyle Athlone RTC on an EEC sprint Programme entitled "The application of Information and Control Technologies to the control of the River Shannon and its catchment".

The Forum delegates were requested to submit their relative views on the setting up of a Shannon Authority.

For Sale

1. Norfolk Knight 27' motor sailor G.R.P.
Aluminium spars. Perkins 4107
Draught 3'6" complete with 4 wheel trailer £10,500 neg.
2. Larch 17'6" row boat £425
3. Yamaha 3 HP with external tank £350

0902 92461 (office)
74805 (res)

Archives

February 1978 "The A.G.M. of Athlone Branch took place on 20th January and out of 145 members approx. 30 turned up

Chairman : Berchs Hannin
Vice " : Damien Delaney
/Ed. what else is new/
Hon.Sec. : Paddy Doyle (Asst. Eileen O'Brien)
Hon.Tres : Sean Fitzsimons
/ed. "See note above"/

Items of interest :- The Annual Sub has been raised to £3.00
The Hon.Secretary was asked to write to Minister expressing our objection to the proposed legislation to introduce Rod Licences to Inland Waters.(!!!)

March 1978 "At the February meeting, despite representation from the angling clubs, the meeting maintained strong opposition to the enforcement of Rod Licences"
"Athlone Bypass - whilst we await the National Primary bypass of Athlone, the wheels of vandalism are turning away the overnight hire-craft from our quays"



ATHLONE AERIAL

Athlone Branch Inland Waterways Association Of Ireland
All Correspondence to: Athlone Aerial, Seans Bar, Main St., Athlone.

December 1991.

Notice of Annual General Meeting.

Fri. 6th December.
8.30pm
Jolly Mariner Marina

Agenda ;

Reports.
Election of Officers.
Election of Rally Committee

The customary cheese and wine will precede the meeting.

Shannon Bye Law Developments.

A further meeting is planned for Dec. 4th. Considerable progress has been made to date. However there remains some major differances to be resolved particularly in the area of charges for winter berthage.

Whilst every effort has been afforded the legislators to have effective bye-laws to prevent harbour abuse the proposed charges of £10 per metre for winter berthage does not include any services such as power or security.

Boat owners who are anxious to leave harbours free during the boating season will be obliged to provide their own mooring buoys or to use I.W.A.I. buoys. This however is not adequate in winter conditions and the availability of quay shelter is vital.

The imposition of winter charges will in effect make boating on the Shannon more exclusive to those who can pay. Does that matter ?

It will also be the first time that you will have to pay to stay.

Shannon Forum.

The application of **INFORMATION AND CONTROL TECHNOLOGIES** to the control of the **RIVER SHANNON AND ITS CATCHMENT**.

ABSTRACT

An economic and environmental value analysis will be carried out on the river Shannon basin, a 336 km river with a catchment of 11,300 sq km. An international team of specialists employing a number of models of **technology transfer** will consider the role of **Information Technology** and a **coordinated approach to facility management**. An **audit** of the technology now in use on the river will be undertaken and a **distributed monitoring, communication and control system** will be designed and implemented against the background of technology available internationally. **Level, depth profile, rainfall, water quality, and environmental and ecosystem status** variables will be measured. Fixed point and mobile measurement will be used to service data acquisition and user terminal communication.

Objective: To analyse the economic benefits and utility value of the river Shannon basin and establish the requirements of all Shannon users for the technologies, and thus to define the demand for the ultimate introduction of these technologies.

Activity: An attempt will be made to articulate the impact that the river has on the economy of various groups and activities in the catchment. The economic benefit of the introduction of the proposed technology will be stressed and, in this context, the requirements of all users of the Shannon will be determined and channelled through the Shannon Forum. Hence the demand for the ultimate introduction of the proposed technologies will be established and presented.

Objective: To complete an audit of current utilisation of the Shannon and the current state of technology applications on the river and its catchment.

Activity: The nature and extent of river use will be established. Against each the application of technology will be documented and the state of current river management and control discussed.

Objective: To define the use of Information Technology, and study the impact of its introduction, in the monitoring and control of river catchment.

Activity: In the light of identified demand and requirements the role that I.T. can have in the monitoring and control of the river catchment will be determined. A systems level approach will be adopted to arrive at the optimal economic benefits that will follow

Objective: To identify other European river catchment sites where cost benefits could arise with similar technology transfer and thus to assess the value enhancement potential of the proposed project to ensure growth and exploitation.

Activity: A limited number of potential sites in Europe suitable for onward implementation of the output of the project will be identified and evaluated. As part of this the required modifications or adaptations in the technology from the Shannon site will be addressed.

Objective: To define a global management and control strategy for the Shannon basin.

Activity: The existing Management/Control strategy will be assessed and an attempt will be made to define an approach to facility management which assesses technology support. Subsequently the output of this activity will have an impact on the specification and design of system decision support software.

Objective: To organise and produce a financing package for the project implementation phase to ensure its viability.

Activity: The fifty per cent funding necessary to ensure the completion of the project will be sourced in a number of possible ways and through the Shannon Forum. This must be put in place before the completion of the Definition Phase. Further the long term viability of the project will require structures that need discussion and approval if possible during the definition phase. Both will form part of the viability concerns during the definition phase.

Objective: To define all the necessary legal requirements relating to contractual arrangements and ownership rights for subsequent phases and long term exploitation.

Activity: Structure, ownership, rights and legal connotations will be completed for agreement and will be included in final definition phase documentation.

Objective: To survey the available technologies, select the systems to be implemented and to complete the blueprint for the implementation phase.

Activity: All issues necessary for the determination of implementation phase feasibility and viability will feature in the blueprint. This includes demand/opportunity considerations, technical specification, financial issues and legal and ownership issues.

Objective: To define a comprehensive training programme for all identified user groups and to produce a programme plan for the dissemination phase.

Activity: All identified users will require training in the use of the computer and communications hardware and the system software and databases. An extensive training programme will be devised to this end. Efficient dissemination procedures will be drawn up so as to optimise the project benefits.